

## INSTALLATION INSTRUCTIONS



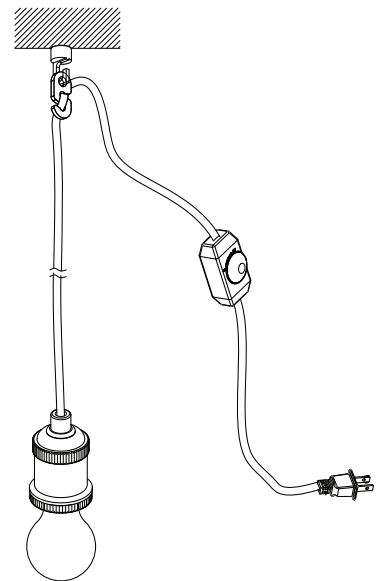
### IMPORTANT

Before opening your Lights.com fixture, please make sure that you carefully read through these instruction sheets. Consider having your fixture installed by a qualified licensed electrician.

**NOTE:** The important safeguards and instructions that appear in this manual are not meant to cover all possible conditions and situations that may occur. It must be understood that common sense, caution and care, are factors that can't be built into any product. This approach must be used by the person(s) caring for and operating the fixture.

### GENERAL INFORMATION

All electrical connections must be in accordance with all ordinances, local and national electrical codes.



### COLLECTION

Alton

### APPLICATION

Pendant

### MODEL NO.

LC003995

LC003996

LC003997

LC003998

### WHAT WE PROVIDE

- Mounting Hardware
- Socket & Cord + Dimmer Set
- 1 Swag Hooks

### WHAT YOU NEED

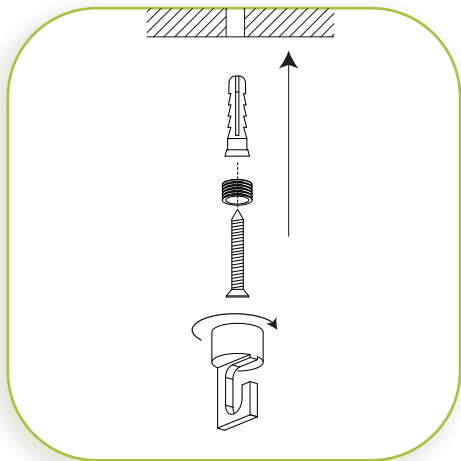
- Phillips & Flat head Screwdrivers
- 1 x 60W E26 Bulb
- Hammer & Nail

### STEP BY STEP INSTRUCTIONS



# 1

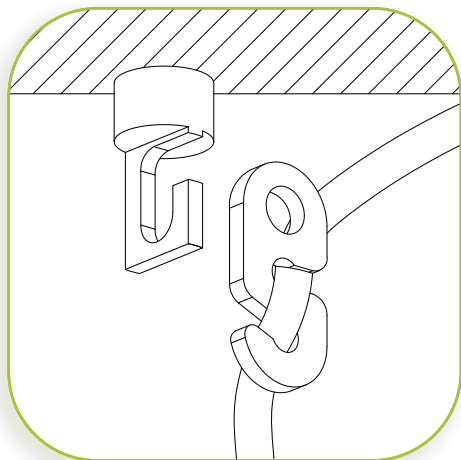
### UNPACK YOUR FIXTURE



# 2

## INSTALL SWAG HOOK

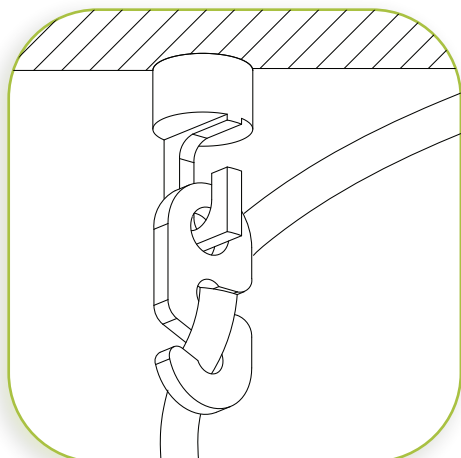
Mark a point in the ceiling where the swag hook is to be mounted. Take a nail and, with a hammer, tap a "pilot hole" into the ceiling at the marked point. **DO NOT** make the hole wider than the anchor. You may also use a drill with a drill bit smaller than the anchor. Place the anchor over the hole and firmly tap it in until the anchor is flush with the ceiling. Mount the threaded nipple to the anchor with the Phillips head screw provided. Install the swag hook onto the threaded nipple and twist to secure.



# 3

## DETERMINE DESIRED HEIGHT

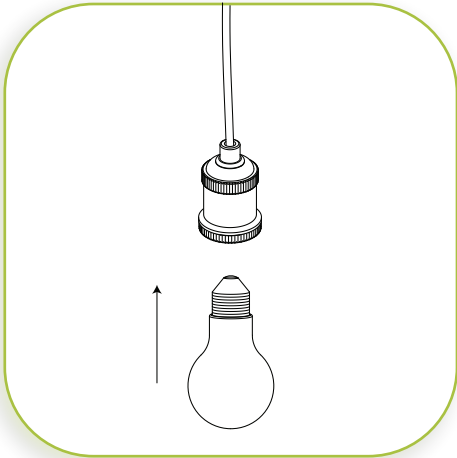
Weave the fixture cord onto the cord clip as shown in the diagram and determine the desired height of the pendant.



# 4

## SECURE FIXTURE CORD

Attach the cord clip onto the swag hook,

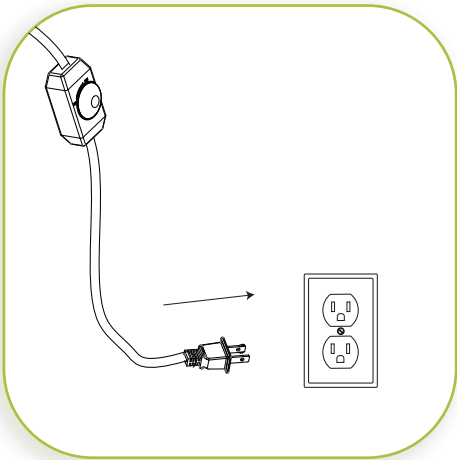


5

### INSTALL THE BULB

Insert the bulb. MAXIMUM WATTAGE 60W.

DO NOT EXCEED THE WATTAGE AS STATED ON THE WARNING LABEL.



6

### PLUG IN FIXTURE

### DIMMER NOTE

Pendant is equipped with an in-line dimmer switch.

Not only does this allow you to create a great ambiance, it allows for energy savings and extends the life of the bulb.