

## INSTALLATION INSTRUCTIONS



### IMPORTANT

Before opening your Lights.com fixture, please make sure that you carefully read through these instruction sheets. Consider having your fixture installed by a qualified licensed electrician.

**NOTE:** The important safeguards and instructions that appear in this manual are not meant to cover all possible conditions and situations that may occur. It must be understood that common sense, caution and care, are factors that can't be built into any product. This approach must be used by the person(s) caring for and operating the fixture.

### GENERAL INFORMATION

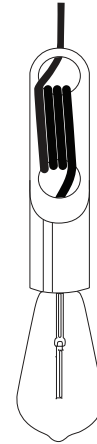
All electrical connections must be in accordance with all ordinances, local and national electrical codes.

### STEP BY STEP INSTRUCTIONS



# 1

## UNPACK YOUR FIXTURE



### COLLECTION

Astor

### APPLICATION

Pendant

### MODEL NO.

LC003810

LC003811

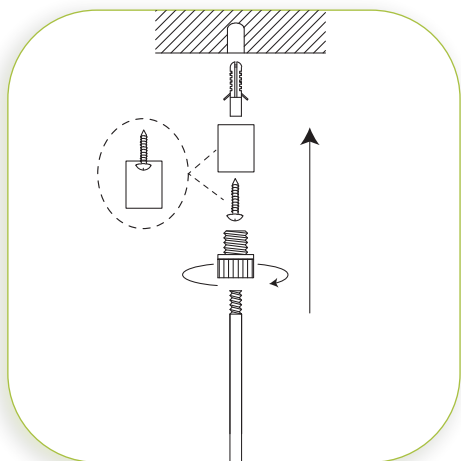
LC003812

### WHAT WE PROVIDE

- Mounting Hardware
- Socket & Cord + Dimmer Set
- 2 Swag Hooks

### WHAT YOU NEED

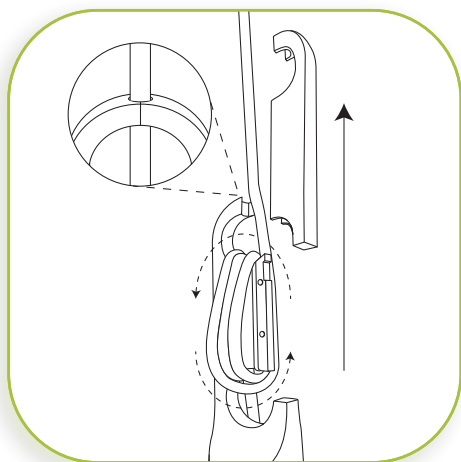
- Phillips & Flat head Screwdrivers
- 1 x 60W E26 Bulb



# 2

### INSTALL SWAG HOOK

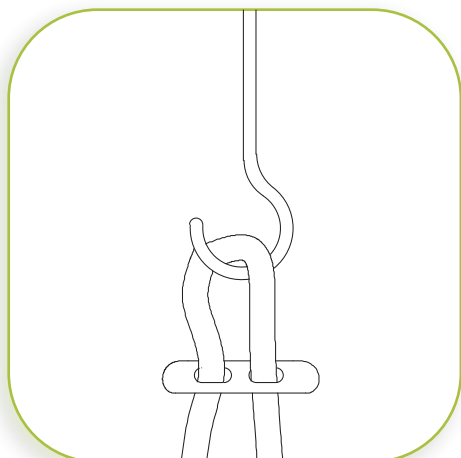
Mark a point in the ceiling where the swag hook is to be mounted. Take a nail and, with a hammer, tap a "pilot hole" into the ceiling at the marked point. DO NOT make the hole wider than the anchor. You may also use a drill with a drill bit smaller than the anchor. Place the anchor over the hole and firmly tap it in until the anchor is flush with the ceiling. Mount the decorative spacer to the anchor with the Phillips head screw provided. Twist the decorative nut into the decorative spacer until secure. Then, install the swag hook into the decorative nut and twist to secure.



# 3

### DETERMINE DESIRED HEIGHT

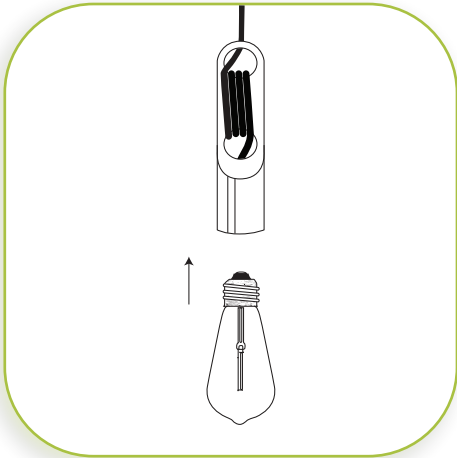
Carefully remove half of the cord holder by sliding the piece up from the cord holder. Hook the fixture cord onto the swag hook and determine the desired height of the pendant. Wrap the excess cord around the cord holder. Slide the removed piece back onto the cord holder while making sure the cord is placed in between the grooves at the top of the cord holder.



# 4

### SECURE FIXTURE CORD

About 2" below the swag hook, attach the cord clip onto the cord on both sides of the swag hook to secure the position of the pendant.

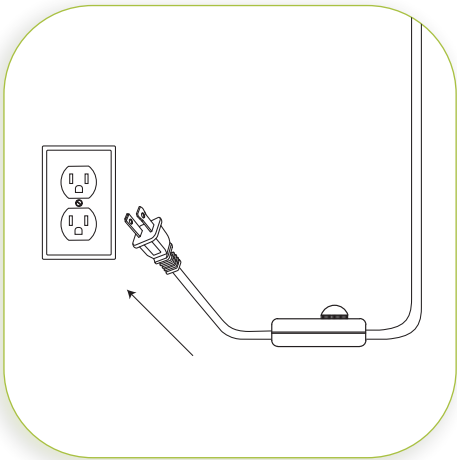


# 5

## INSTALL THE BULB

Insert the bulb. MAXIMUM WATTAGE 60W.

DO NOT EXCEED THE WATTAGE AS STATED ON THE WARNING LABEL.



# 6

## PLUG IN FIXTURE

### DIMMER NOTE

Lamp is equipped with an in-line dimmer switch.

Not only does this allow you to create a great ambiance, it allows for energy savings and extends the life of the bulb.