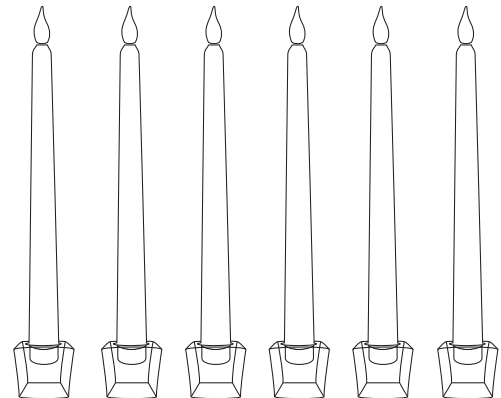




IMPORTANT

Before opening your LampLust Classic Ivory 10" Wax Flameless Taper Candles with Glass Candleholders, please make sure that you carefully read through these instruction sheets.

NOTE: The important safeguards and instructions that appear in this manual are not meant to cover all possible conditions and situations that may occur. It must be understood that common sense, caution and care are factors that can't be built into any product. This approach must be used by the person(s) caring for and operating the candles.



GENERAL INFORMATION

Battery installation should only be performed by an adult. Only batteries of the same or equivalent type as recommended should be used. Battery leakage can cause corrosion and damage to this product so please remove non-functioning batteries immediately. Remove the batteries from product during long periods of non-use.

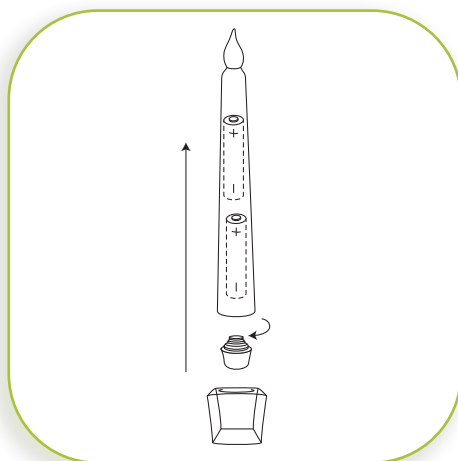
DO NOT DISPOSE OF IN FIRE. Please dispose at your local recycling facility.

WHAT WE PROVIDE

- Six Ivory 10" Wax Flameless Taper Candles
- 12 AA Batteries (2 Per Candle)
- 6 Glass Candle Holders
- 6 Rubber Inserts for Taper Fitting

STEP BY STEP INSTRUCTIONS

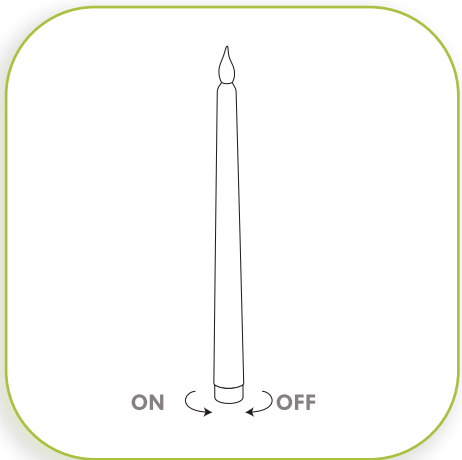
Before turning on your candles, remove the plastic from around the batteries and insert them into the the battery compartment.



1

BATTERY INSTALLATION

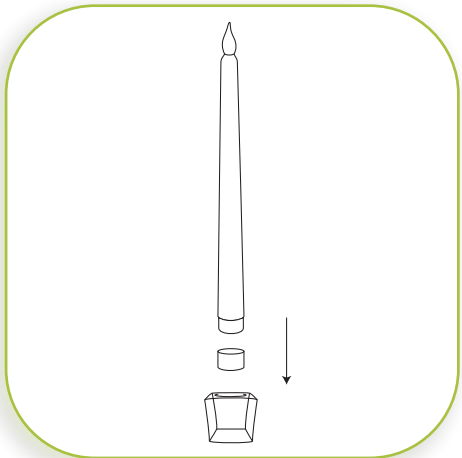
Each candle works with 2 x AA batteries (included). The battery compartment is located on the bottom of the candles. To open the battery compartment, unscrew the base of the candle (clockwise). Battery should be inserted with the correct polarity as indicated (+/-) and battery compartments secured before use.



2

ON/OFF

Turn the base of the candle counterclockwise until fully secured to turn on. Turn the base clockwise to turn off.



3

RUBBER INSERTS

Rubber inserts are included with your purchase to assist with stabilizing the taper candles in the glass holders in the event that they do not sit straight on their own. If needed, place the insert on the base of the taper candle and place the taper candle into the holder.